

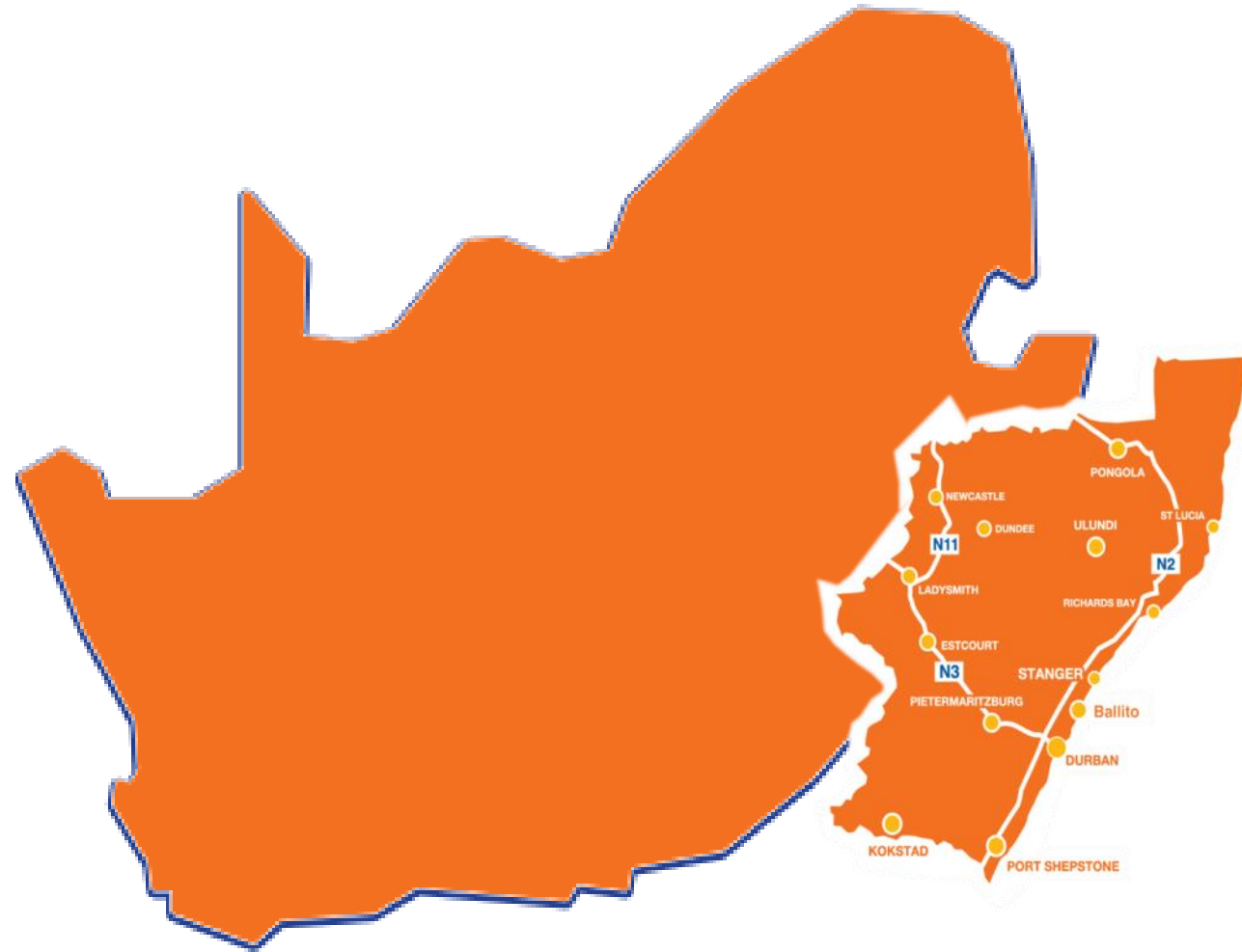


Trade & Investment
KwaZulu-Natal

Doing Business between KwaZulu-Natal & the European Union 25 October 2023



OUR LOCATION



KwaZulu-Natal's Demographics

Premier: Hon Ms. Nomusa Dube-Ncube

Size: 94 361 km²

Population: 11,531 million

GDP: R501 619 billion

GDP Stake: 16%



South Africa and KwaZulu-Natal Statistical Information

	SOUTH AFRICA	KWAZULU-NATAL
Official Name	Republic of South Africa	Province of KwaZulu-natal
Head of State	President Cyril Ramaphosa	
Provincial Premier		Premier Ms. Nomsa Dube-Ncube
Capital Cities	Cape Town (Legislative) Pretoria (Administrative) Bloemfontein (judicial)	Pietermaritzburg
Population	59 622 million	11,531 million
Area	1 220 813 km ²	94361 km ²
Total GDP	R3,128 058 trillion (constant prices)	R501 619 bn (constant prices)
GDP growth	-0.6 % q/q (Q2)	-2.0 (Q2)
GDP per capita	R81 875	R66 254
Inflation	4,50%	4,00%
Exports	R53 billion (2020)	R103 billion (April 2020)
Imports	R88 billion (2020)	R102 billion (2020)
Lending rate	8,75% (March 2020)	8,75 % (March 2020)
Unemployment	30,1%	26,91%
Main trading partners	China, United Staes, Netherlands, United Kingdom ,German	USA, UK, Germany, Japan & China, Zambia, Namibia



A SNAP SHOT OF KWAZULU-NATAL PROVINCIAL AGREEMENTS WITH THE WORLD TO PROMOTE ECONOMIC DEVELOPMENT



Shanghai, China



Guangxi, China



Fujian, China



Jiangsu, China



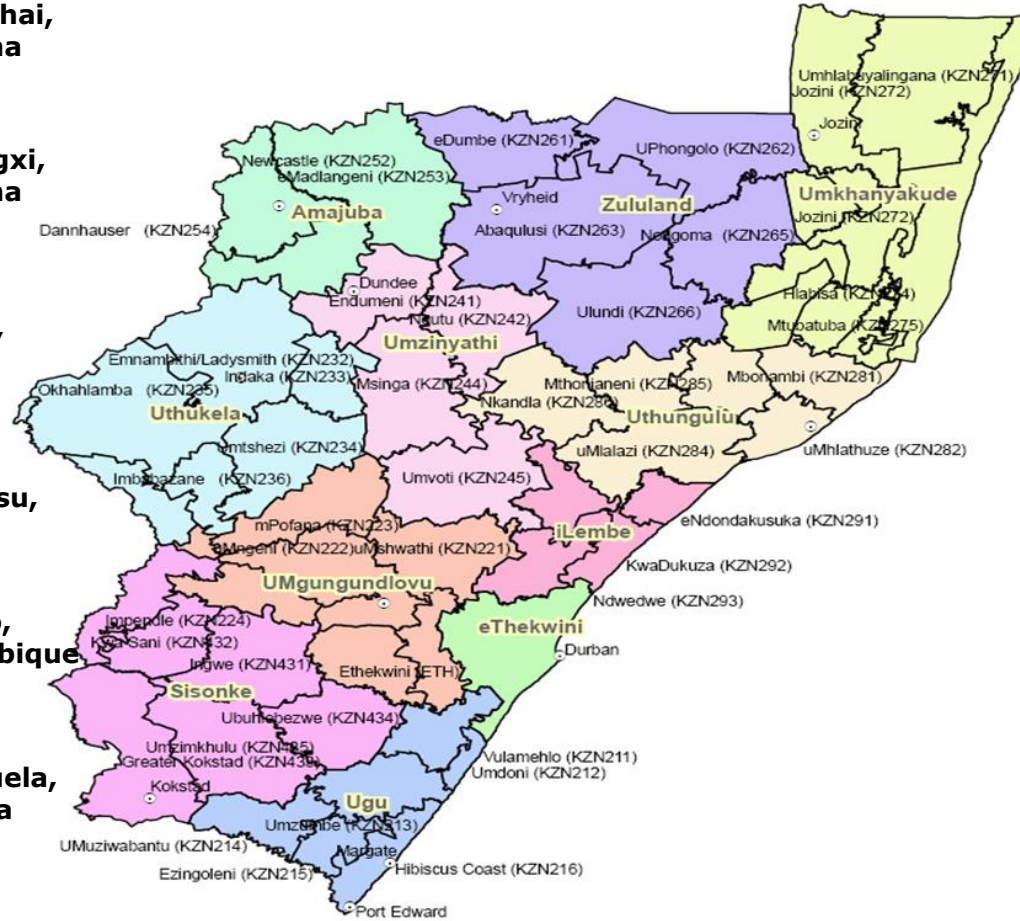
Maputo, Mozambique



Benguela, Angola



Jakarta, Indonesia



Walloon, Belgium



Punjab, India



Baden Wurttemberg, Germany



Reunion Island



Queensland, Australia



Kinshasa, Democratic Republic of Congo



KwaZulu-Natal aims to be the leader in export trade and the premier destination for investment in the South Africa.





KwaZulu-Natal: South Africa's Export Hub

Home to two of Africa's largest and busiest seaports in Africa

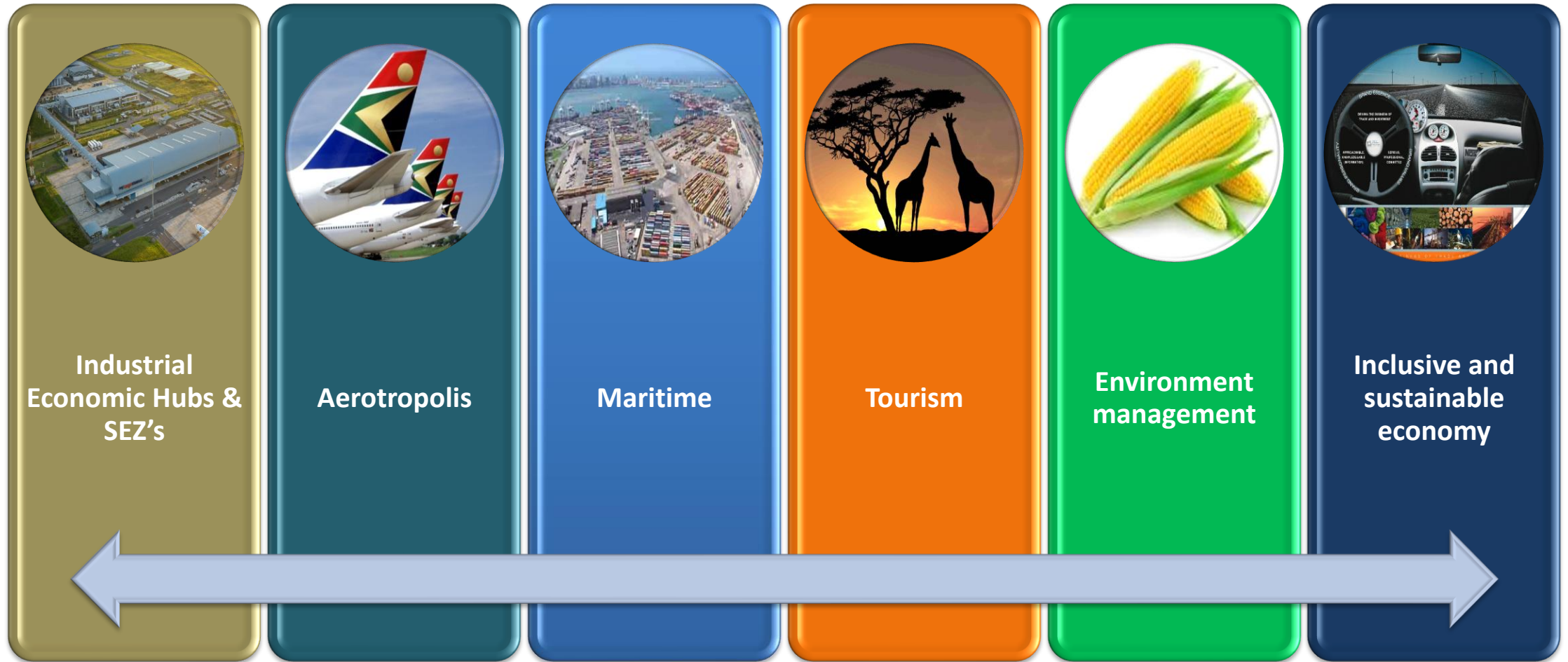
(Durban and Richards Bay)

Home to two Special Economic Zones

Responsible for 65% of South Africa's containerized trade



PROVINCIAL STRATEGIC PILLARS



DOING BUSINESS WITH THE EUROPEAN UNION

Doing business with the European Union



The European Union and South Africa enjoy a unique strategic and preferential economic relationship that is embedded in the SADC-EU Economic Partnership Agreement.

- It includes cooperation across a much wider set of social, environmental, industrial, developmental, and security-related matters.
- The EU has historically been South Africa's main trading partner and the biggest source of foreign direct investment, representing over 40% of SA's total FDI.

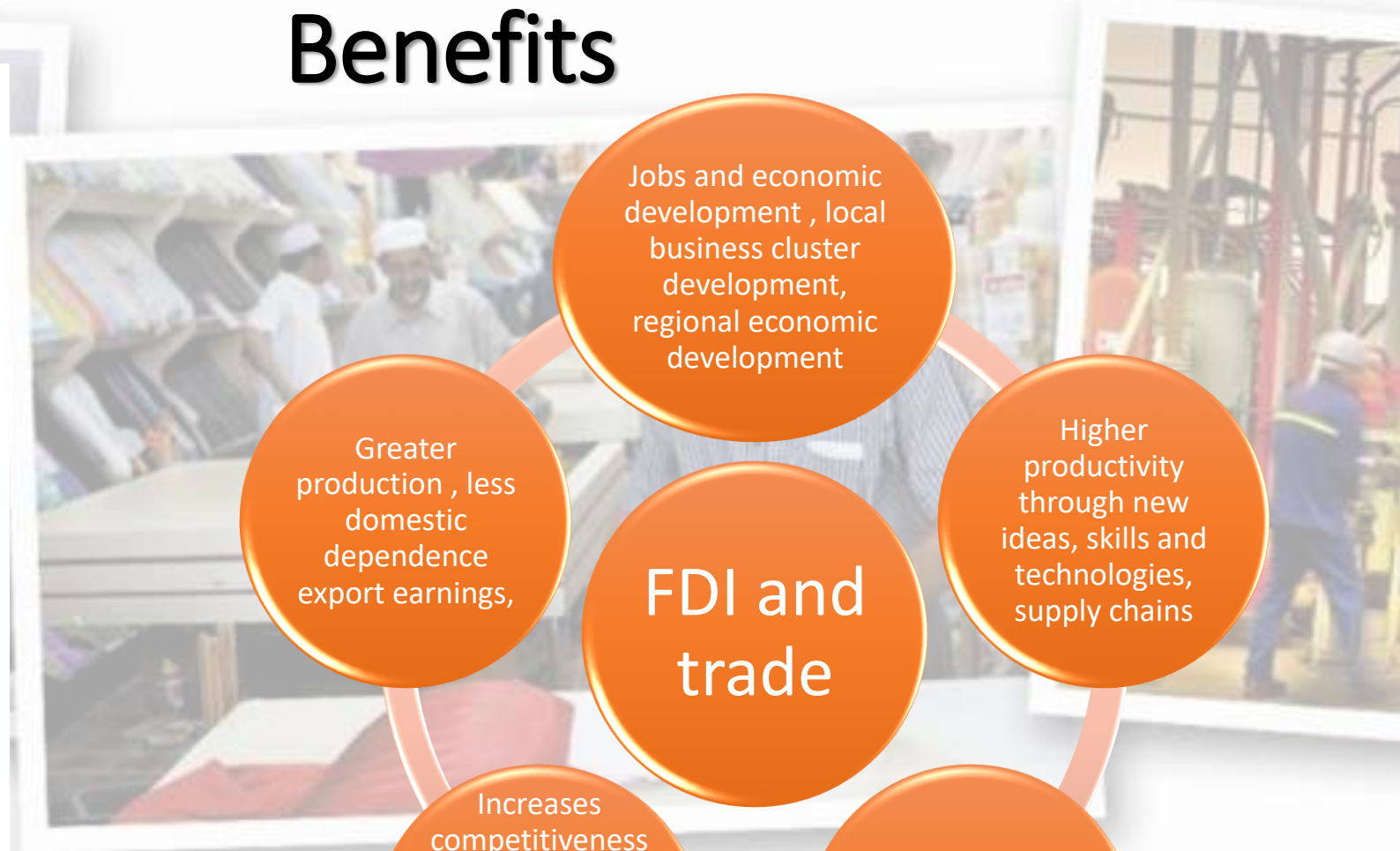
**Trade and Investment KwaZulu-Natal
is the official trade and investment promotion agency
of the Provincial Government
and Home of the Regional**

investSA
ONE STOP SHOP

**TIKZN is listed under schedule 3C of the
Public Finance Management Act (PFMA) of 1999**



Trade and Investment Benefits



Operational Units





KZN Economic Development Entities



Collaborations

District
Municipalities

Government
Departments

Chambers of
Commerce

Industry
Association and
Export Council

Embassies and
Trade
Commissions

Provincial
Investment
Promotion
Agencies

Small Enterprise
Development
Agency

DFI's



**Trade &
Investment**
KwaZulu - Natal
YOUR KNOWLEDGE PARTNER IN BUSINESS



Tools and Support



Access to Search Engines –
Market Intelligence



KZN Export Information Portal &
TIKZN Website

www.exportkzn.co.za

www.tikzn.co.za



Access to relevant Training and
Capacity Building Programmes



Access to DSM Reports

Incentives of Offer at KwaZulu- Natal through TIKZN

Non-Financial

- Incentive Application Support
- Market Development Support
- Training, Development and Capacity Building Programmes
- Access to Market Intelligence Report
- Access to the KZN Export Information Portal
- Access to Market Scoping Reports

Financial

- International Mentorship Programmes (PUM, SIPPO, SES)
- Financial Assistance Support Scheme (FAS)
- Technical Assistance Fund (TAF)

INVESTMENT PROMOTION



SUSTAINABLE DEVELOPMENT GOALS

1 NO POVERTY 	2 ZERO HUNGER 	3 GOOD HEALTH AND WELL-BEING 	4 QUALITY EDUCATION 	5 GENDER EQUALITY 	6 CLEAN WATER AND SANITATION
7 AFFORDABLE AND CLEAN ENERGY 	8 DECENT WORK AND ECONOMIC GROWTH 	9 INDUSTRY, INNOVATION AND INFRASTRUCTURE 	10 REDUCED INEQUALITIES 	11 SUSTAINABLE CITIES AND COMMUNITIES 	12 RESPONSIBLE CONSUMPTION AND PRODUCTION
13 CLIMATE ACTION 	14 LIFE BELOW WATER 	15 LIFE ON LAND 	16 PEACE, JUSTICE AND STRONG INSTITUTIONS 	17 PARTNERSHIPS FOR THE GOALS 	 SUSTAINABLE DEVELOPMENT GOALS

Global Megatrends shaping production

Technology/4IR	Policy and governance	Sustainability
<ul style="list-style-type: none">• Advanced robotics and AI• Digitisation of business• Additive manufacturing (3 D printing)	<ul style="list-style-type: none">• More interventionism in national policies• More protectionism in trade and investment• More regional, bilateral and ad hoc economic co-operation	<ul style="list-style-type: none">• Sustainability policy and regulations• Market driven changes in products and processes• Physical supply chain impact• (UNCTAD, 2020)

Source: ITC, 2020

Four likely trajectories for production going forward to build your business around



Source: ITC, 2020

SECTORS OF FOCUS



	Manufacturing	Tourism	Agriculture and agro-processing	Property and infrastructure development	Services, transport & logistics	Oceans economy (incl maritime industry)
Traditional	<ul style="list-style-type: none"> Automotive and component manufacturing Clothing, textiles, footwear, leather and leather products Chemical and plastics manufacturing (transitioning to bio-based, renewables) 	<ul style="list-style-type: none"> Nature-based tourism Arts, culture and heritage tourism Hotels, resorts, houseboats and other accommodation MICE 	<ul style="list-style-type: none"> Fruit (citrus and subtropical), vegetables, grains, honey, and livestock Paper, furniture and other wood products Food and beverage processing and packaging (sugar-cane, livestock, vegetables, fruit, soya, maize, nuts) 	<ul style="list-style-type: none"> Residential and commercial Industrial parks Road and rail infrastructure Bulk infrastructure 	<ul style="list-style-type: none"> Trade (retail) Business services (BPO, finance, insurance, and other professional services) 	<ul style="list-style-type: none"> Ocean based tourism Cruise tourism Ports
Growth	<ul style="list-style-type: none"> Pharmaceuticals and cosmetics Mineral beneficiation Advanced manufacturing Renewable industry technology Industrial waste recycling 	<ul style="list-style-type: none"> Medical tourism Adventure tourism Film tourism 	<ul style="list-style-type: none"> Energy (biofuels), cellulose and other biomass processing Agricultural technology Cut flowers Medicinal and herbal plants 	<ul style="list-style-type: none"> Healthcare and facility development Private education institutions Green buildings Smart buildings 	<ul style="list-style-type: none"> ICT and software development Aviation and related services Film and media 	<ul style="list-style-type: none"> Oil and gas Small craft harbour and waterfront development Boat and ship building and repair (floating docks) Aquaculture

TRADE PROMOTION

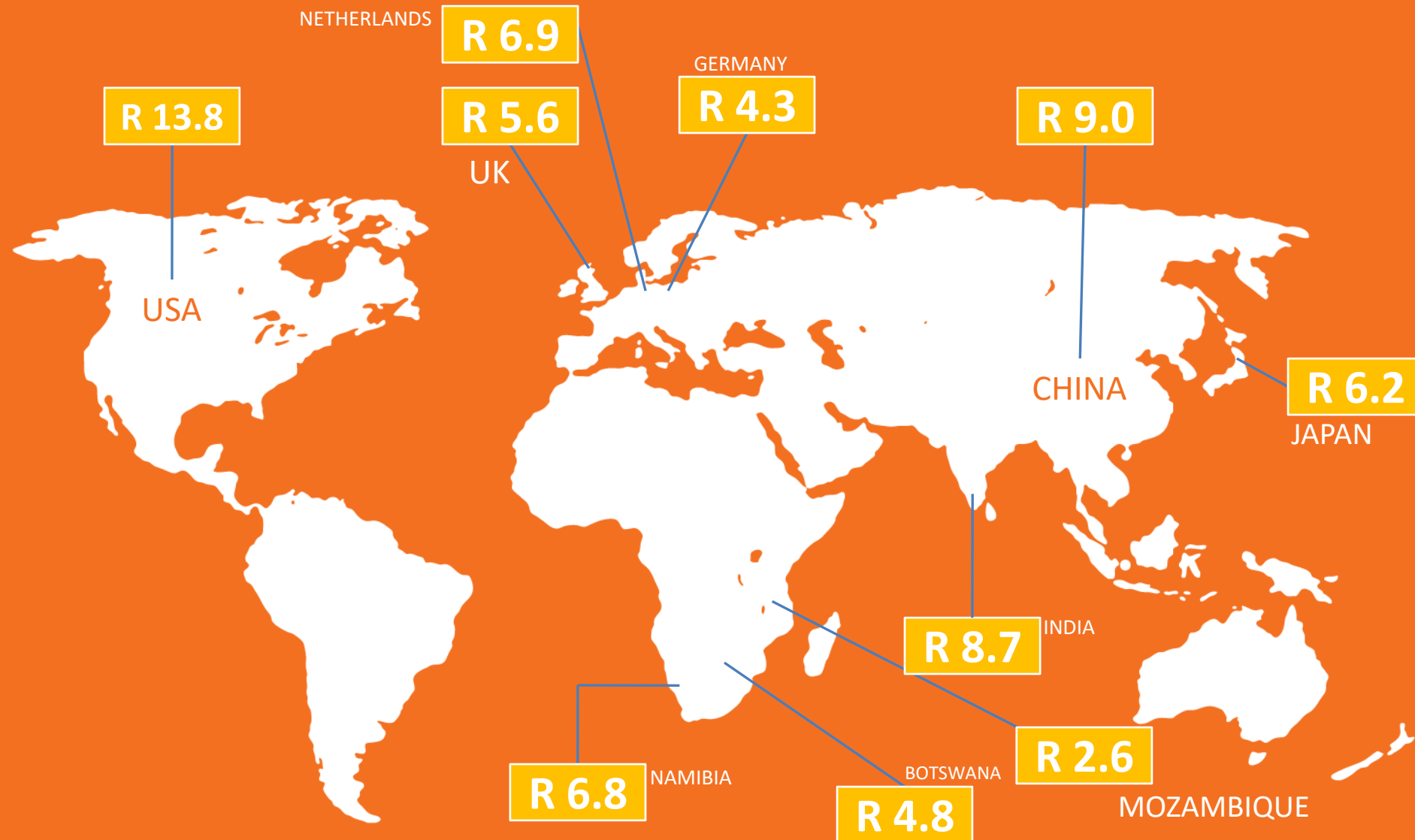
EXPORT PRODUCTS FROM KZN



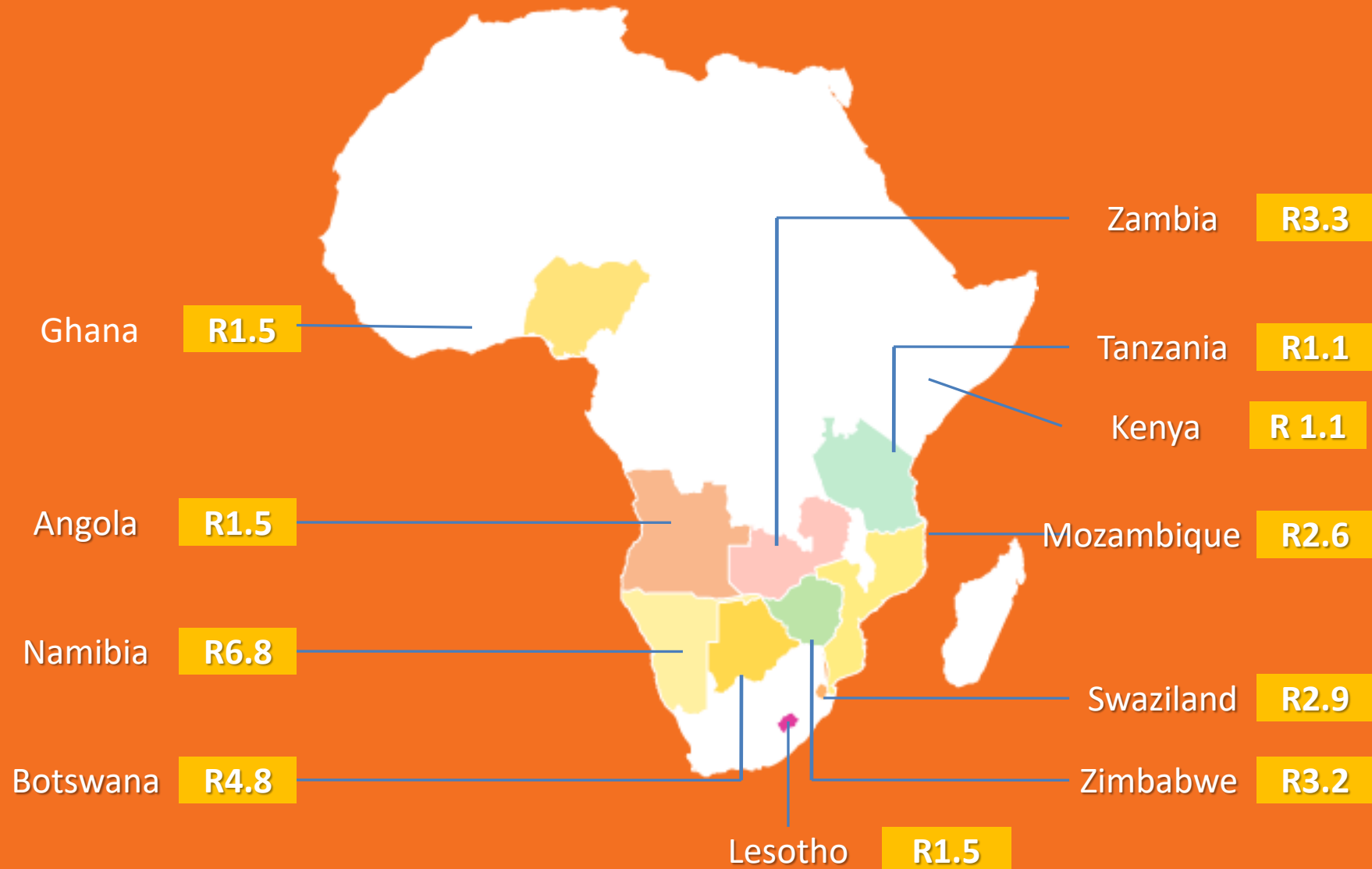
- Automotive parts and components
- Sugar, prepared foodstuffs and beverages
- Chemicals and Plastics
- Furniture, arts & craft
- Pulp & paper
- Engineering & Consultancy services
- Electronic, communication devices
- Leisure boats, transport and logistics equipment
- Machinery
- Jewellery, base metals
- Clothing, textile, body armor



KZN TOP 10 EXPORTS DESTINATION MARKETS, (BILLIONS)



KZN TOP 10 EXPORTS AFRICA MARKETS (Billions)

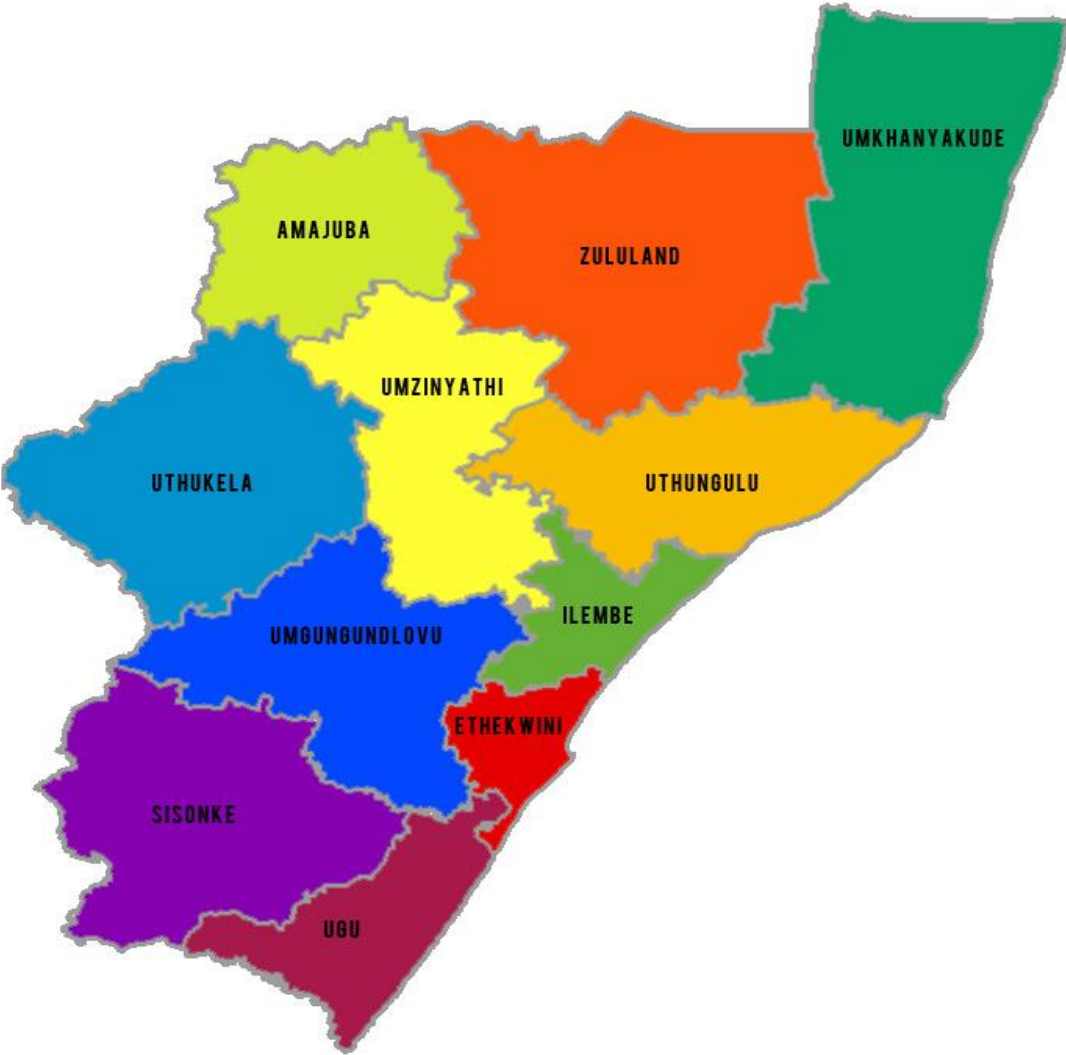


KZN DISTRICT INDUSTRIAL HUBS

DISTRICT INDUSTRIAL HUBS



DISTRICT	INDUSTRIAL HUB
AMAJUBA	CLOTHING AND TEXTILE
ETHEKWINI	AUTOMOTIVE SUPPLIER PARK
ILEMBE	RENEWABLE ENERGY
SISONKE	WOOD PROCESSING
UGU	PERISHABLES
UMGUNGUNDLOVU	LEATHER PROCESSING
UMKHANYAKUDE	AGRICULTURAL MECHANISATION
UMZINYATHI	COAL BENEFICIATION
UTHUKELA	ELECTRONICS HUB
ZULULAND	AGRI-PROCESSING (MEAT)



SPECIAL ECONOMIC ZONES



RICHARDS BAY INDUSTRIAL DEVELOPMENT ZONE (RBIDZ)

RICHARDS BAY IDZ AT A GLANCE



- Situated within a well-established and functioning industrial area with existing operations of large industries
- Offers a unique opportunity to expand on resource-based and related value-adding manufacturing enterprises
- Existing land-portfolio of 216 ha with future expansion of over 3000 ha
- Land available on long term lease
- Provides the benefit of a Customs Control Area
- Located close to SA's deepest port

RBIDZ SECTORS OF FOCUS



- **Metals beneficiation**
 - ❖ Aluminium
 - ❖ Titanium
 - ❖ Iron ore
- **Agro-processing**
 - ❖ Pulp, Horticulture & meat production
- **Port optimization**
 - ❖ Containerization, Ship/rig building & repair
 - ❖ Oil & Gas
- **Renewable & Clean energy**
 - ❖ Solar
 - ❖ Fuel cells
 - ❖ Biomass
 - ❖ LNG
- **ICT**
 - ❖ Techno-parks Innovation Hub



DUBE TRADEPORT SPECIAL ECONOMIC ZONE

DUBE TRADEPORT SPECIAL ECONOMIC ZONE



- Home of King Shaka International Airport (KSIA)
- Built around a 50-year master plan, over 2 840 ha site
- Catalyst for global business and trade
- Integrates supply chains, accelerates efficiencies and offers business the agility to compete globally
- Dedicated to develop the air cargo industry and serve the SADC and global market
- Africa's first purpose-planned airport city and master-planned business environment
- Freight-orientated and world-class cargo facilities and security

TARGET SECTORS



- Aerospace and aviation-linked manufacturing and related services;
- Agriculture and agro-processing, inclusive of horticulture, aquaculture and floriculture;
- Electronics manufacturing and assembly;
- Medical and pharmaceutical production and distribution; and
- Clothing and textiles.

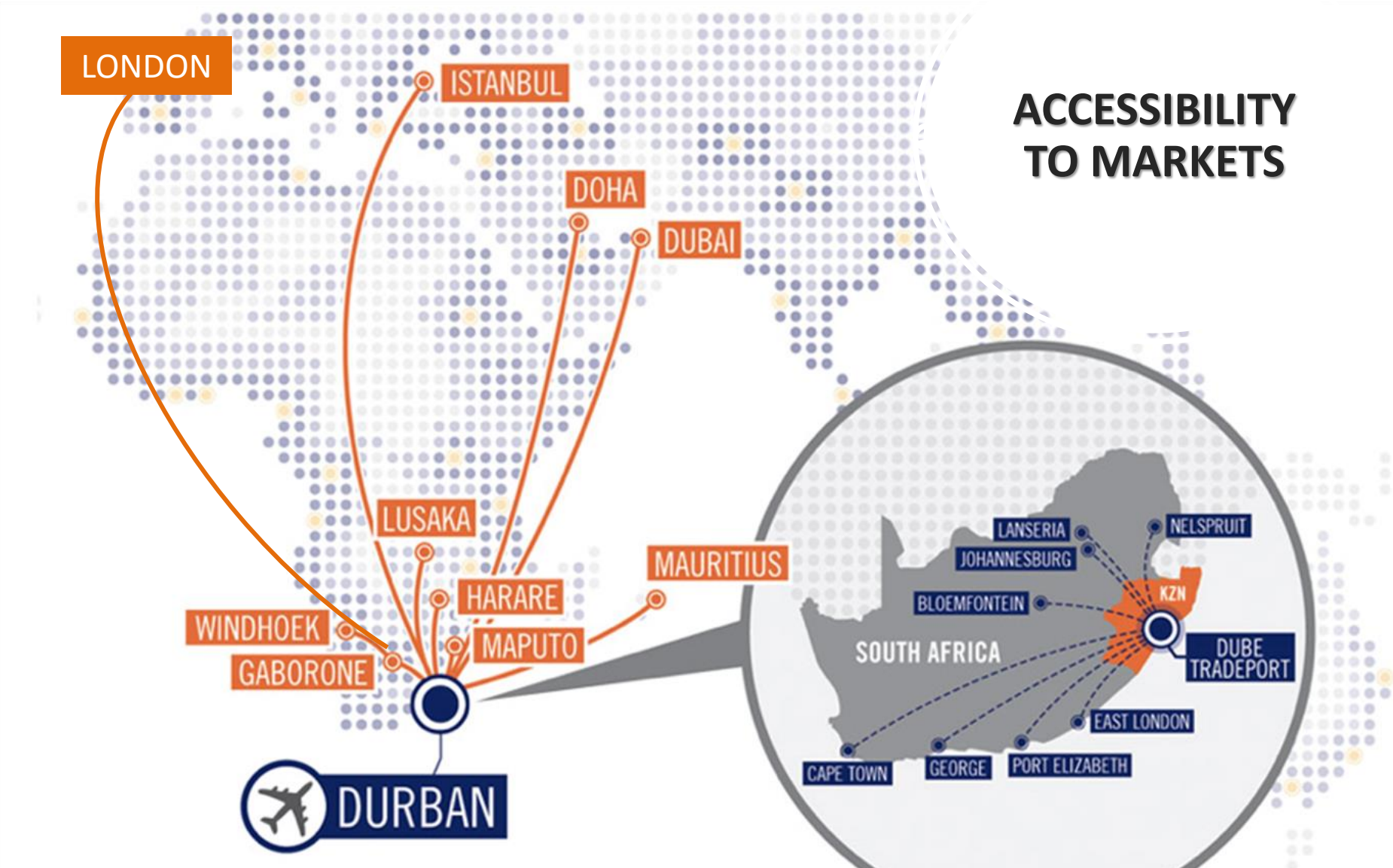
DURBAN AEROTROPOLIS



- The Durban Aerotropolis is a flagship development at Dube TradePort.
- The initiative with a 60-year master plan envisions a 32 000 hectare special mixed-use development anchored by the King Shaka International Airport.
- Developed by the KZN Department of Economic Development, Tourism and Environmental Affairs, the eThekweni Municipality and local landowners, the project will be a business and trade hub between the Durban and Richards Bay ports and impacting on a surrounding area within a 100km radius.
- The aerotropolis will give both investors and developers the opportunity to work from global spatial development best practice to improve connectivity as well as efficiency. It will also create a space that will have a positive impact on local communities and at the same time draw in investment and stimulate economic growth.

KING SHAKA INTERNATIONAL AIRPORT

AIR CONNECTIVITY



MAJOR COMPANIES IN KWAZULU-NATAL



KZN VALUE PROPOSITION



Large labour force with varied skill level

Excellent transport infrastructure, (two ports, an international airport and national roads)

Access to markets (especially African markets)

A good quality of life (ideal climate, diverse culture, natural endowments)

Large youth population

Large, entrenched industries with strong value chains

Available land at a competitive price

A resilient economy with strong growth potential

THIS IS KWAZULU- NATAL



A wealth of
investment
opportunities



South Africa's
most diverse
economy



Continents most
sought after
emerging markets



Global gateway to
South Africa, Africa
& the world



Contact Details

Physical address:

1 Arundel Close
Kingsmead Office Park
Durban
4001

Postal address:

PO Box 4245
Durban
4000

Telephone: + 27 (0) 31 368 9600

Fax: + 27 (0) 31 368 5888

Email: info@tikzn.co.za

Website: www.tikzn.co.za

Physical address:

99 George Storrar Avenue
Groenkloof
Pretoria
0181

Postal address:

99 George Storrar Avenue
Pretoria
0181

Telephone: + 27 (0) 12 346 4386

Fax: + 27 (0) 86 501 0848

Email: info@tikzn.co.za

Website: www.tikzn.co.za



Thank You

@ info@tikzn.co.za

☎ +27 (0) 31 368 9600

DURBAN OFFICE:

📍 Trade & Investment House, Kingamead Office Park,
Kingamead Boulevard, Durban, 4001, South Africa
📮 PO Box 4245, Durban, 4000, South Africa
☎ +27 (0) 31 388 9600
📠 +27 (0) 31 388 5888

GAUTENG OFFICE:

📍 99 George Storrar Avenue, Groenkloof, Pretoria
☎ +27 (0) 12 346 4386/6783
📠 +27 (0) 12 346 4774

