



A TEAM OF PROFESSIONALS WHO AIM TO:

- Boost innovation.
- Stimulate networking and support for businesses.
- Promote Wallonia among investors.
- Enhance the value of Walloon businesses and their know-how.

OUR MEMBERS

- Carriers and logistics service providers.
- Clients or shippers from various sectors, including biotechnologies, the food industry or the distribution sector.
- Infrastructure managers.
- Suppliers, components manufacturers and service providers.
- Players in the training sector.
- Innovators (businesses, universities and research centres).
- Sector federations and associations.

LOGISTICS IN WALLONIA offers you

DEVELOPMENT AND INNOVATION

- Partners matching.
- Innovative projects organisation and funding.
- Themed meetings, workshops (Loginn Groups).
- LEAN and GREEN programme.

GUIDANCE AND REFERRAL

- Individual meetings.
- Advice.

EVENTS & NETWORKING

- Projects fair.
- Seminars and events.
- General Meeting.

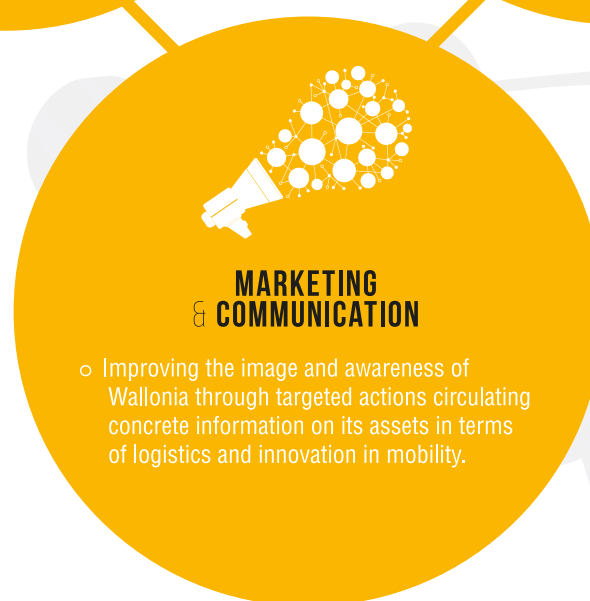
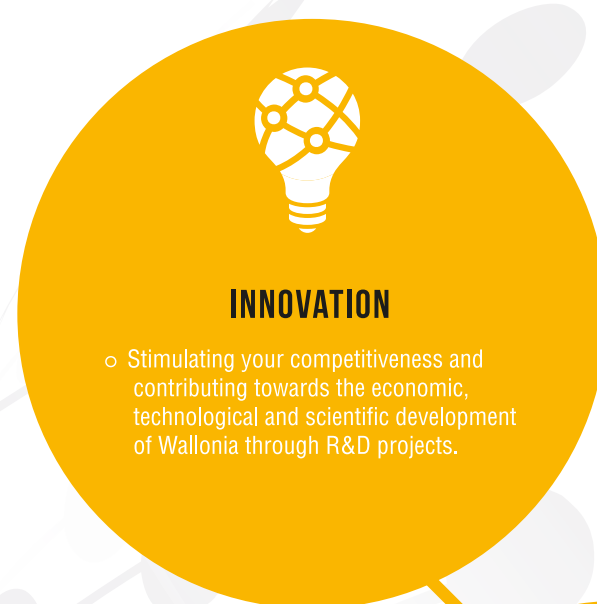
UP-TO-DATE INFORMATION

- Studies and strategic information.
- Business opportunities.
- Seminars and events diary.

PROMOTION AND VISIBILITY

- Presence in our newsletter.
- Simplified participation in international fairs.
- Preferential rates for events and publications.
- Business Partners and sponsoring.

OUR 5 STRATEGIC AXES



IN FIGURES

Over
300
MEMBERS

 **5000**
logistics job offers
analysed

Over
1200
participants in
our **network**

Meetings with over
500 businesses and
institutions per year

 **5200**
CONTACTS NEWSLETTER

WALLONIA-BELGIUM

LEADING LOGISTICS PLATFORM ON THE MAP OF EUROPE.



900
kilometres of
motorways and
expressways.



6
rail freight stations.



4
river ports /
High-density waterways.



3
airports / Liege Airport:
named Europe's best cargo
airport!

COMPETITIVE
CLUSTER DEDICATED
TO THE TRANSPORT, LOGISTICS
AND MOBILITY SECTOR
IN WALLONIA



Liege Airport | Building 52 | 4460 GRACE-HOLLOGNE | BELGIUM
T. +32-(0)-4 225.50.60 | F. +32-(0)-4 225.50.65
info@logisticsinwallonia.be | www.logisticsinwallonia.be

